

Dr. Élise Vareilles

Tenured Faculty, HDR , 6^e échelon
IMT Mines Albi-Carmaux

IMT Mines Albi-Carmaux
Centre Génie Industriel
Route de Teillet 8100 Albi

☎ +33 5 63 49 30 92

☎ +33 6 83 06 38 54

FAX +33 5 63 49 31 38

✉ elise.vareilles@mines-albi.fr

🌐 <https://perso.mines-albi.fr/~vareille>

Born on the 20th of November 1978

Last update: Wednesday 16th October, 2019

Education

- 2016 **Qualification to the duties of professor - CNU 61^{rst} section**, *Computer Engineering, Automatic and Signal Processing* .
- 2015 **Accreditation to supervise research or Habilitation à Diriger les Recherches (HDR)**, **Institut National Polytechnique de Toulouse (INPT)**, *Defended on the 24th of November 2015, Entitled: "Interactive Configuration and Constraints: Knowledge, Filtering Methods and Extensions"*, Scientific Topic : Industrial Engineering.
 - in front of the panel composed of :
 - Reviewers : Prof. E. CAILLAUD, Prof. B. PENZ et Prof. G. TROMBETTONI
 - Examiners : Dr. H. FARGIER, Prof. M. ALDANONDO, Ing. J-M. ASTESANA, Prof. N. JUSSIEN and Prof. L. GENESTE (Advisor INPT)
- 2005 **Ph.D, Institut National Polytechnique de Toulouse (INPT)**, *Defended on the 24th of June 2005, Entitled: "Constraint-based Design: Development of an Interactive Decision Support System"*, Scientific Topic: Industrial Engineering, Work distinguished by the Léopold Escande Prize 2005.
 - in front of the panel composed of :
 - Reviewers : Prof. F. BENHAMOU et Prof. A. BERNARD
 - Examiners : Prof. L. GENESTE, Prof. J-P NADEAU, Dr. P. LAMESLE, Ing. Ph. DAVID
 - Supervising Team : Prof. M. ALDANONDO, Dr. K. HADJ HAMOU and Dr. P. GABORIT

Work Experience

- Nov. 2017 **Affiliated Professor**, Department of Mechanical Engineering, ETS Montréal, Canada.
- Jan. 2016 **Tenured Faculty**, *ORKID Team leader*, Industrial Engineering Lab, IMT Mines Albi-Carmaux.
- Sept. 2005 **Tenured Faculty**, *Associate Professor*, Industrial Engineering Lab, IMT Mines Albi-Carmaux.

Publications List

15 International Journal *Web of Science*.

ICAE(1), AIEDAM(1), CII(3), JIIS(1) IJPR (4), EAAI (2), JIM(1), IJCIM(2), JCP(1)

> 25 International Conferences *Web of Science* ou LNCS.

IEEM(8), CP(1), AIAI(3), PLM(3), INCOM(3), CSDM(3), SKIMA(3) ...

> 10 International Conferences with proceedings.

MOSIM (6), IESM (2) ...

> 15 Configuration Workshop or JFPC.

Workshop Configuration(8), JFPC (10)

Doctoral Supervision

1 PhD student still in progress, Supervision cumulative rate: 30%.

R. Ayachi (2020).

7 former PhD students, Supervision cumulative rate: 260%.

L. I. Garcés Monge (2019), D. Guillon (2019), A. Sylla (2018), A.-F. Barco Santa (2016), A. Codet de Boisse (2013), J. Abeille (2011), M. Djefel (2010).

2 Post-doctorate students, Supervision cumulative rate: 60%.

P. Pitiot (2010), C. Béler (2009).

3 Masters students, Supervision cumulative rate: 200%.

É. Villeneuve (2009), G. Goris (2008), D. Ghilés (2007).

Scientific Outreach

GdR MACS, *C2EI* \Rightarrow *INCAS work group co-chair (since January 2018)*, INCAS: Ingénierie des Connaissances et Apprentissage pour les Systèmes de production de bien et de service.

SAGIP, *Scientific association board member (since June 2019)*, SAGIP: Société d'Automatique, de Génie Industriel et de Productique.

Program Committee, *4 Special Tracks*.

MIM(2019), APMS(2014), INCOM(2012), MOSIM(2010).

Scientific Committee, *29 Conferences*.

Design (2020), CP (2019), SPL (2019), AAAI (2018), IEOM (2018), FOMI (2018), IJCAI (2017), IEEM (2017-2019), Pro-Ve (2016), PLM(2015), Pro-Ve(2015), Configuration Workshop(2010, 2012, [2014, 2019]), JFPC([2009, 2013], [2017-2019])

Steering Committee, *11 Events*.

JFPC (2019), PFIA (2019), MOSIM (2018), IEOM (2018), ISCRAM (2017), CP(2016), CWS(2016), Pro-Ve(2015), I-ESA(2014), JFPC(2012), GDR MACS(2012).

International Collaboration, *8 Universities*.

Greece (2016, 2018, 2019), Canada(2010, 2017-2018), Finland (2016), Denmark(2015, 2013, 2018), Costa Rica (2017), Vietnam(2014), Colombia(2013), Netherland(2011).

Visitings : 3 weeks Costa Rica (2017), 1 week Greece (2016, 2017, 2019), 2 weeks Finland (2016), 2 months Danemark (2015), 1-2 weeks Québec (2010, 2017, 2018)

PhD Examiner, *7 Thesis*.

Walid Es Soufi (2018), Pierre-François Gimenez (2018), Sara Shafie (2017), Abderrazak Daoudi (2016), Nicolas Schmidt (2015), Aurélien Reyssset (2015), Juan Camilo Romero Bejarano (2013).

WoS Journal Reviewer, *5 articles / year*.

IJPR, CII, AIEDAM, DSS, EAAI

Research Projects

- 2017-2020 **OPERA Project**, *Outils logiciels et ProcEssus pour la Réponse à Appel d'offres*, Softwares and Processes for bidding solicitation.
- Funding : ANR PCRE, Budget : 1.3 M€
 - PhD students : A. Sylla (2018), D. Guillon(2019), R. Ayachi (2020).
- 2013-2016 **CRIBA Project**, *Construction et Rénovation Industrialisées Bois Acier*, Industrialized building and retrofit with wood and steel.
- Funding : ADEME, Budget : 8.7 M€
 - PhD student : A. F. Barco Santa (2016)
- 2013-2015 **2II-MCO Project**, *Amélioration de la Productivité des PME en Ingénierie Électrique dans le domaine du Maintien en Condition Opérationnelle*, Improvement of the productivity of SMEs in electrical engineering in the field of maintenance in operational condition.
- Funding : sub-contractor of École Nationale d'Ingénieur de Tarbes, Budget : 2.9 M€
 - PhD student : ∅
- 2008-2011 **Hélimaintenance Project**, *Plate-forme intégrée de maintenance Hélicoptère*, Integrated Helicopter Maintenance Platform.
- Funding : FUI, Budget : 10.5 M€
 - Role : Assistant in setting up the project, Operational Work
 - PhD student : A. Codet de Boisse (2013)
- 2007-2011 **ATLAS Project**, *Aides et assistances pour la conception, la conduite et leur coupLage par les connAissanceS*, Knowledge-based system for design process, management process and their interactions.
- Funding : ANR RNTL, Budget : 1.7 M€
 - PhD students : M. Djefel (2010), J. Abeille (2011)
- 2002-2005 **VHT Project**, *Virtual Heat Treatment*.
- Funding : IMS, Budget : 1.7 M€
 - PhD student : É. Vareilles (2005)

Software Development

CoFiADE, *Constraint Filtering for Aiding Design*.

<http://cofiade.mines-albi.fr/newcofiade/>

- Language : Perl
- Research Projects : OPERA, CRIBA, 2II-MCO, Hélimaintenance, ATLAS, VHT

OPERA Platform, *Élaboration d'offres et Gestion des risques en RAO*, Offer Elaboration and Risk Management in Call for Tenders.

<https://research-gi.mines-albi.fr/display/OPERA/Opera+Home>

- Language : Ruby, Perl
- Research Project : OPERA

CRIBA Platform, *Configuration de calepinage de façades*, Façade Layout Synthesis.

<http://gind.mines-albi.fr/fr/projet/criba>

- Language : Java, Perl
- Research Project : CRIBA

ATLAS Platform, *Conception simultanée produit - projet*, Concurrent Product-Process Design.

<http://193.51.2.246/atlas>

- Language : Ruby, Perl
- Research Project : ATLAS

Educational Activities

Teaching Activities, École des mines d'Albi-Carmaux.
around 200 hours per year.

Student Supervision, École des mines d'Albi-Carmaux.

- Master Student Internship: 6 to 8 students/ year,
- Student Coaching : 10 students or apprentices / year,

Doctoral Teaching Activities, GDR MACS, EdSys.

Design and Artificial Intelligence: Design and Constraints

- GDR MACS, 2013 (4h30),
- EdSys, 2014 (7h).

Educational Innovation, IMT Mines Albi.

- System Design, Master students, Industrial Engineering Option: use of Lego®Mindstorms and PTC Windchill
- Introduction to product configuration, researcher night 2015-2017 and Pint of Sciences 2018, novice public : use of Lego®

Course Management, 5 Modules.

- Perl programming, 0.3 ECTS, Master students, IMT Mines Albi, Industrial Engineering Option,
- Functional Specification & System Design, 1.5 ECTS, Master students, IMT Mines Albi, Industrial Engineering Option,
- Manufactured Product, 1 ECTS, Undergraduate students, IMT Mines Albi, Students and apprentices, common core,
- Algorithm and Programming, 1.7 ECTS, Undergraduate students, IMT Mines Albi, Students and apprentices, common core.

Additional Activities

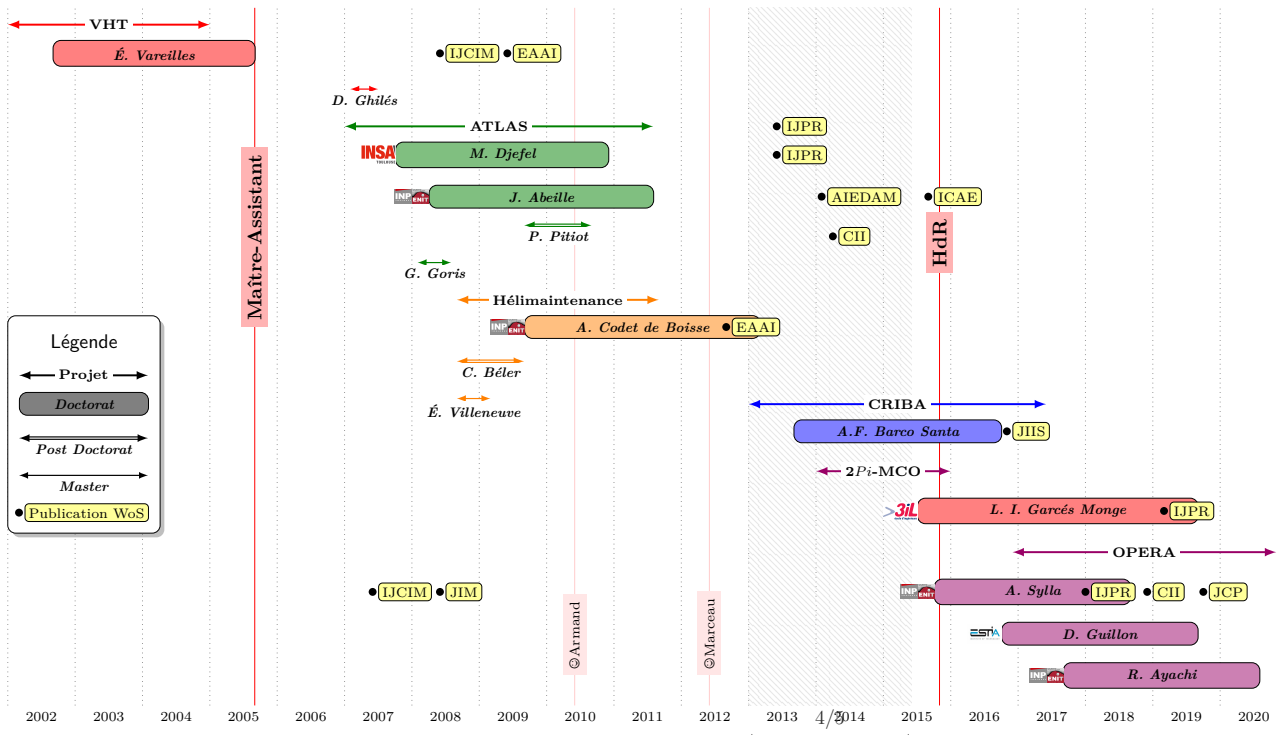
Women in Science - IMT Mines Albi Ambassador, since 2015.

- Conferences and Testimonial for Elles Bougent and Women in Aerospace Associations,
- #ImindTheLiberty project co-leader,
- Lapony Trophy 2020 project leader and team member.

Administrative Activities - IMT Mines Albi.

- EdSys, CoGeFoDo : surrogate since 2018
- School Board Member & Technical Representative since 2009
- Communication Representative for the CGI lab since 2014
- First-aid Rescue Workers, since 2008

Research Activities



International Journal WoS

15 journal articles *Web of Science*.

- 2019 [Pitiot+2019], P. Pitiot, L. I. Garcés Monge, M. Aldanondo, **É. Vareilles**, P. Gaborit, Optimisation of the concurrent product and process configuration: an approach to reduce computation time with an experimental evaluation, *International Journal of Production Research*, IJPR, 2019.
Impact Factor : 2.691 (2018)
- 2018 [Stanitsas+2018], M. Stanitsas, K. Kirytopoulos, **É. Vareilles**, Facilitating sustainability transition through serious games: A systematic literature review, *Journal of Cleaner Production*, JCP, 2018.
Impact Factor : 2.691 (2018)
- 2018 [Sylla+2018], A. Sylla, D. Guillon, **É. Vareilles**, M. Aldanondo, T. Coudert, L. Geneste, Configuration knowledge modeling: How to extend configuration from assemble/make to order towards engineer to order for the bidding process, *Computers in Industry*, CII, DOI: <https://doi.org/10.1016/j.compind.2018.03.019>, 2018.
Impact Factor : 2.691 (2018)
- 2017 [Sylla+2017], A. Sylla, **É. Vareilles**, T. Coudert, K. Kirytopoulos, M. Aldanondo, L. Geneste, Readiness, feasibility and confidence: how to help bidders to better develop and assess their offers, *International Journal of Production Research*, IJPR, vol. 55 (23), pp. 7204-7222, 2017.
Impact Factor : 2.325 (2016)
- 2017 [Barco+2017], A. F. Barco Santa, **É. Vareilles**, P. Gaborit, M. Aldanondo, Building Renovation Adopts Mass Customization - Configuring Insulating Envelopes, *Journal of Intelligent Information Systems*, JIIS, vol. 49(1), pp. 119-146, 2017.
Impact Factor : 1.000 (2015)

- 2015 [**Vareilles+2015**], *E. Vareilles, T. Coudert, M. Aldanondo, L. Geneste, J. Abeille*, System Design and Project Planning: model and rules to manage their interactions, Integrated Computer-aided Engineering, ICAE, 2015, DOI: 10.3233/ICA-150494, vol. 22, no. 4, pp. 327-342, 2015.
Impact Factor : 4.667 (2013)
- 2014 [**Romero Bejarano+2014**], *J-C. Romero Bejarano, T. Coudert, É. Vareilles, L. Geneste, M. Aldanondo and J. Abeille*, Case-based reasoning and system design: An integrated approach based on ontology and preference modeling, Artificial Intelligence for Engineering Design, Analysis and Manufacturing, AIEDAM, vol. 28(1), pp. 49-69, 2014.
Impact Factor : 0.407 (2012)
- 2014 [**Pitiot+2014**], *P. Pitiot, M. Aldanondo and É. Vareilles*, Concurrent product configuration and process planning: Some optimization experimental results, Computers in Industry, CII, vol. 65(4), pp. 610-621, 2014.
Impact Factor : 1.709 (2012)
- 2013 [**Pitiot+2013**], *P. Pitiot, M. Aldanondo, É. Vareilles, P. Gaborit, M. Djefel and S. Carbonnel*, Concurrent product configuration and process planning, towards an approach combining interactivity and optimality, International Journal of Production Research, IJPR, vol. 51(2), pp. 524-541, 2013.
Impact Factor : 1.460 (2012)
- 2013 [**Zhang+2013**], *L. Zhang, É. Vareilles and M. Aldanondo*, Generic bill of functions, materials, and operations for SAP(2) configuration, International Journal of Production Research, IJPR, vol. 51(2), pp. 465-478, 2013.
Impact Factor : 1.460 (2012)
- 2012 [**Vareilles+2012**], *É. Vareilles, M. Aldanondo, A. Codet de Buisse, T. Coudert, P. Gaborit and L. Geneste*, How to take into account general and contextual knowledge for interactive aiding design: Towards the coupling of CSP and CBR approaches, Engineering Applications of Artificial Intelligence, EAAI, vol. 25(1), pp. 31-47, 2012.
Impact Factor : 1.625 (2012)
- 2009 [**Vareilles+2009**], *É. Vareilles, M. Aldanondo, and P. Gaborit*, How to take into account piecewise constraints in constraint satisfaction problems, Engineering Applications of Artificial Intelligence, EAAI, vol. 22(4-5), pp. 778-785, 2009.
Impact Factor : 1.444 (2009)
- 2008 [**Aldanondo+2008a**], *M. Aldanondo and É. Vareilles*, Configuration for mass customization: how to extend product configuration towards requirements and process configuration, Journal of Intelligent Manufacturing, JIM, vol. 19(5), pp. 521-535, 2008.
Impact Factor : 1.018 (2008)
- 2008 [**Aldanondo+2008b**], *M. Aldanondo, É. Vareilles, K. Hadj-Hamou and P. Gaborit*, Aiding design with constraints: an extension of quad trees in order to deal with piecewise functions, International Journal of Computer Integrated Manufacturing, IJCIM, vol. 21(4), pp. 353-365, 2008.
Impact Factor : 0.722 (2008)
- 2007 [**Vareilles+2007**], *É. Vareilles, M. Aldanondo and P. Gaborit*, Evaluation and design: a knowledge-based approach, International Journal of Computer Integrated Manufacturing, IJCIM, vol. 20(7), pp. 639-653, 2007.
Impact Factor : 0.722 (2008)